

Slow Chair

Ronan & Erwan Bouroullec, 2006

vitra.



Slow Chair & Ottoman

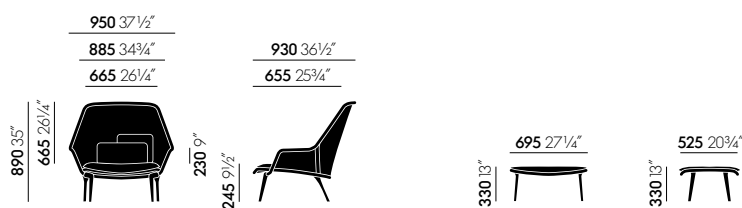
Ronan and Erwan Bouroullec created this expansive armchair by using an extremely strong, precisely shaped knit which is stretched over the metal frame like a fitted stocking. Thanks to the knit sling cover, the Slow Chair combines soft comfort with ergonomic support, which is further enhanced by thin seat and back cushions. The translucent sling cover replaces the thick cushions of traditional armchairs,

resulting in a design that is lightweight, yet generously proportioned. In the living room or on a sun porch, the Slow Chair maintains an understated presence while offering superb comfort.

Materials

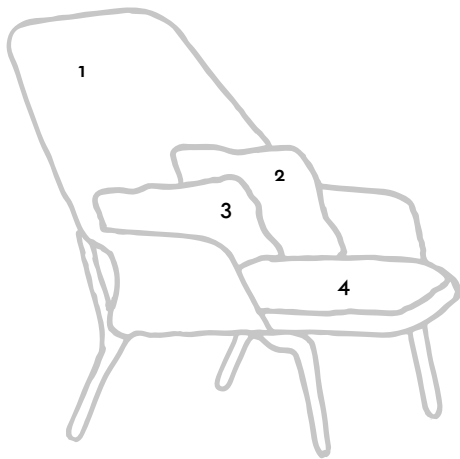
- **Frame/Cover:** tubular steel frame with extremely strong, precisely shaped knitted fabric which is stretched over the frame.
- **Upholstery:** polyurethane foam and polyester fibre, including a seat cushion and two backrest cushions.
- **Base:** die-cast aluminium legs with polished or powder-coated finish.
- **Glides:** all bases fitted with hard glides for carpet; felt glides optionally available for hard floors.

Dimensions

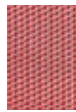


Slow Chair

Slow Chair Ottoman



Slow Chair - red/cream



1
Tricot - red/
cream



2
Tonus - moss-
green



3
Laser - green

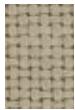


4
Coda - cream

Slow Chair - brown/cream



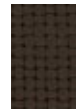
1
Tricot -
brown/
cream



2
Panamone -
moss grey



3
Laser - green



4
Panamone - dark
brown

Slow Chair - brown



1
Tricot - brown



2
Intreccio -
anthracite



3
Tonus
- moss-
green



4
Cosy - auber-
gine

Slow Chair - black



1
Tricot - black



2
Intreccio -
anthracite



3
Tonus
- moss-
green



4
Laser - black

Slow Chair - blue/green



1
Tricot -
blue/green



2
Hopsak - nero/
forest



3
Twill - ink
blue



4
Laser - dark
blue/forest

03
aluminium
polished

40
chocolate
powder-coated
(smooth)

Base

