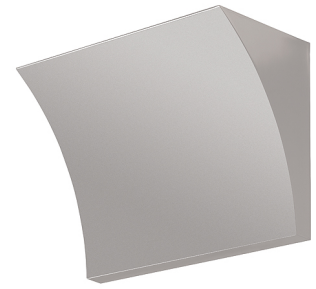


FLOS

POCHETTE

Mounting	Wall
Lamps description	1 x MAX 160W R7s HDG
Environment	Indoor
Finish	Chrome, Grey, Shiny white
Technical description	Wall lamp providing indirect light. Pressure die-cast Zamak alloy structure. Molded steel, galvanized white wall attachment containing the wall attachment system as well as the electrical devices. Pochette has a single dimmable light source in the traditional recessed series.



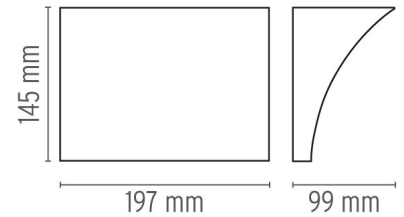
Pochette

designed by Rodolfo Dordoni

Wall lamp providing indirect light

- F9700020 Grey
- F9700057 Chrome
- F9700009 Shiny white

DIMENSIONS



PHYSICAL

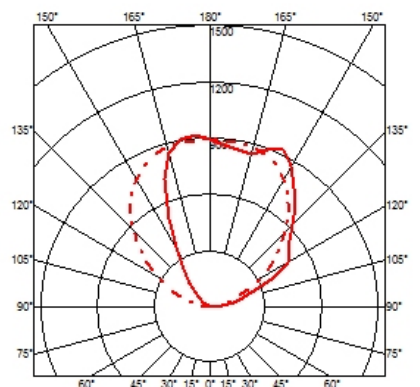
Supply	Terminal block
Construction material	Zamak
Weight (kg)	1.6
Minimum distance from illuminated object (mm)	800



CERTIFICATIONS



IP
20



Pochette . Lamps



HDG 160W R7s

Lamp wattage:

160 W

Lamp category:

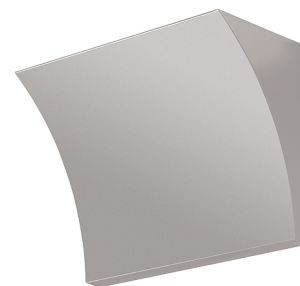
Halogen mains

Socket:

R7s

Lamp type:

HDG



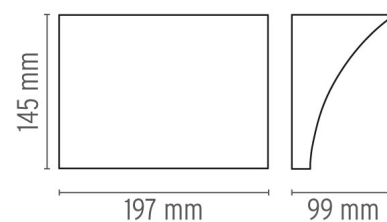
Pochette

designed by Rodolfo Dordoni

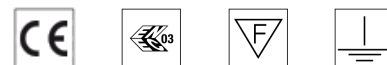
Wall lamp providing indirect light

- F9700020 Grey
- F9700057 Chrome
- F9700009 Shiny white

DIMENSIONS



CERTIFICATIONS



IP
20

